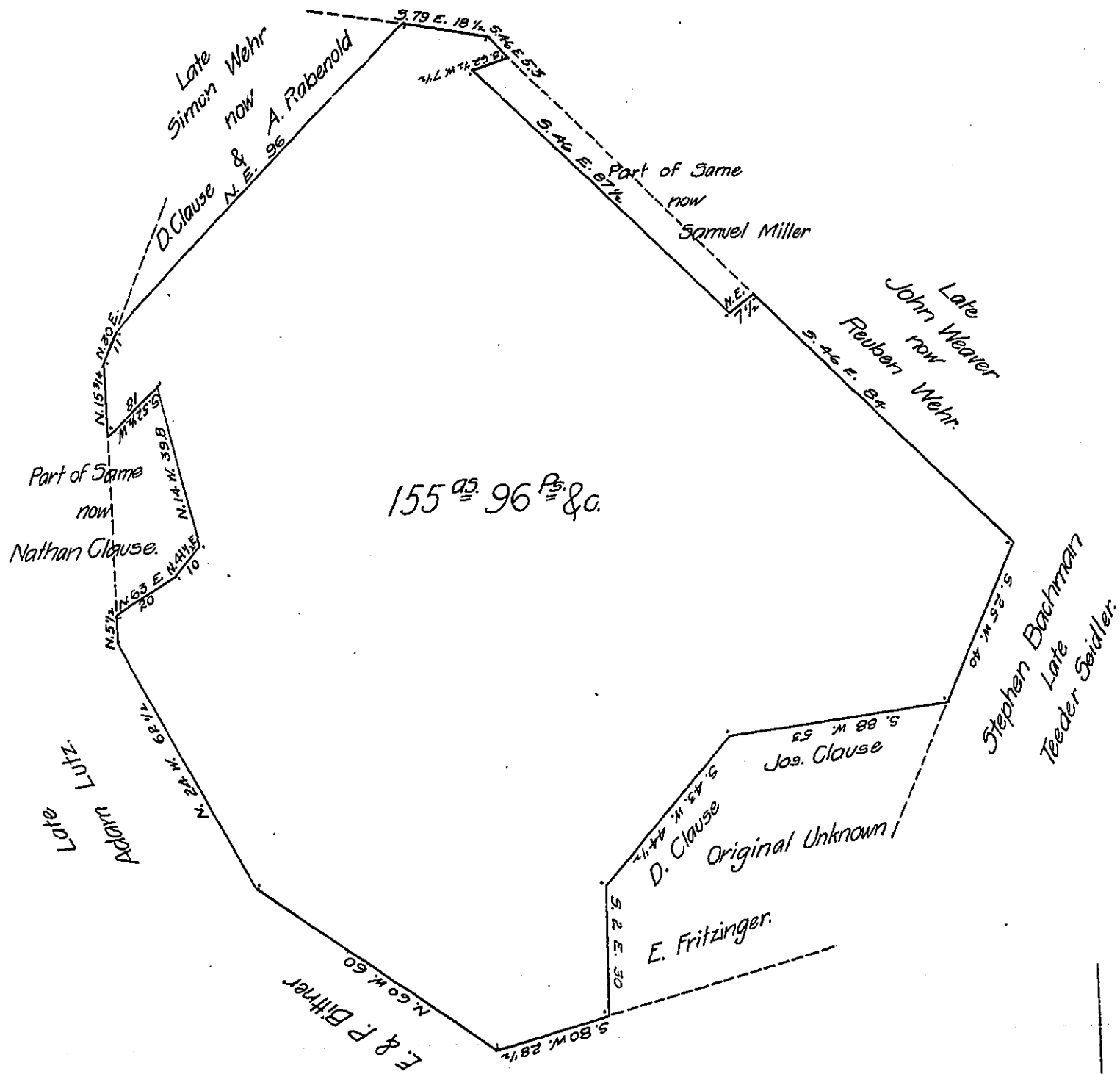


FORM No. 1.



Draft of a tract of land situate in Heidelberg township, Lehigh County containing 155^{ac.} 96^{P.} & Allowance, Surveyed for David Clause, Elias Kressel, Joseph Clause, Amos Rabenold, Elenius Fritzinger & Reuben Wehr, the 13th day of March, A.D. 1872, being part of a larger tract of 161^{ac.} 135^{P.} & c. originally surveyed in pursuance of a warrant granted to Simon Wehr, dated the 13th Oct. A.D. 1753.

Geo. Blank, C.S.

To J. M. Campbell, Esq.
 Suror General.

(P.S. The above was also surveyed on Wt. to George Rodrock dated Nov. 26th 1748.)

G. B.

IN TESTIMONY that the above is a copy of the original remaining on file in the Department of Internal Affairs of Pennsylvania, made conformably to an Act of Assembly approved the 16th day of February 1833, I have hereunto set my hand and caused the Seal of said Department to be affixed at Harrisburg, this 13th day of September 1907.

Henry Houck
 Secretary of Internal Affairs.

872.